

A Place To Remember Cards

\$1.75 each (4 1/4" x 5 1/2")

The inside verse is printed on a pin stripe insert sheet in black ink. Envelope is included with each card.

See Pages 30 and 31 for verse options available for specific cards.

** If you choose to use one of the available verse options on a card other than the one designated, the customized price of \$2.50 each (minimum of 20) applies.*

***Customized / Personalized Cards \$2.50 each (minimum of 20)**

If you would like us to create a custom card, you may choose any card design *except Shining Star #T-6225*. Simply email/fax/mail us the wording you would like to use. Be sure to indicate which panel of the card you would like the wording to be on. All custom cards use the item number #__0100: with the chosen style code filled in the blank space.

EXAMPLE: # A0100

By filling in the blank with the "A" style code, you would be indicating that you want custom wording in the Blessed Children card design.

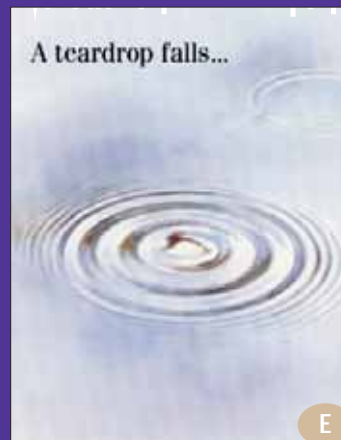
NOTE CARDS: See page 31 for selected card designs available in bulk quantities of 250 (8 1/2" x 5 1/2") sheets/package at a cost of \$11. These sheets contain **NO VERSES** (cover art only) and are shipped flat (unfolded) so that they can be sent through a laser printer for personalized messages. They are printed on white laser compatible paper. Perfect for handwritten notes, program invitations, memorial service folders, etc.



Blessed Children



Lone Leaf



Fallen Teardrop



Tears of a Clown



Remembrance Tree



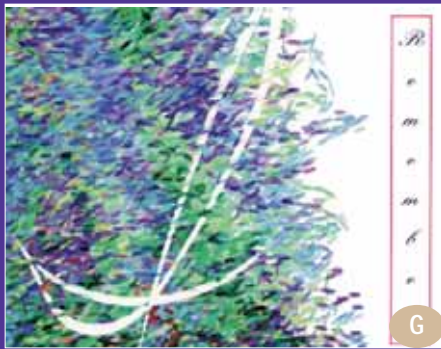
A Special Place



Butterfly



Angel Bear



I Remember



NICU



We Remember



Memories in Bloom



Contemporary



Shining Star

Shining Star

#T-6225: **Cover Verse:** A Star Shines Brighter.

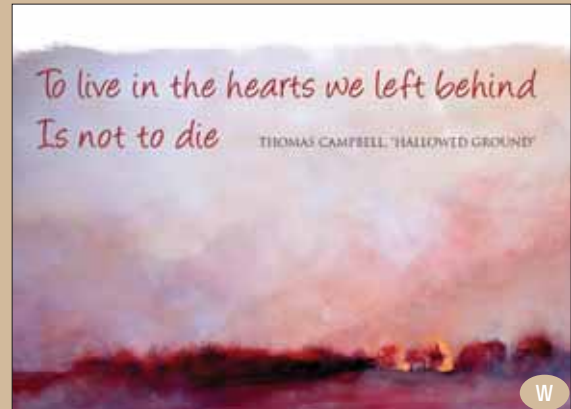
Inside Verse: Let the light of your baby's life live forever in your heart. (die cut cover) Cannot be customized.
(5 1/2 x 4 1/4) Card w/envelope \$3.00 each

A Place to Remember is pleased to introduce a new line of cards created from the original art of co-owner, Calvin deRuyter. In the last few years, Calvin has become a well-known watercolor artist and teacher in the Midwest.

\$1.75 each
(4 1/4" x 5 1/2")

The inside verse is printed on an insert sheet in black ink. Envelope is included with each card.

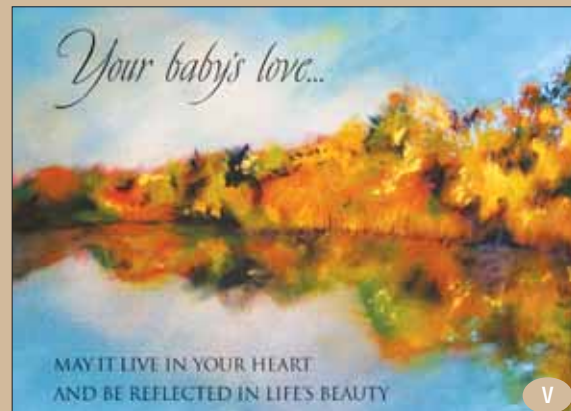
See Pages 30 and 31 for verse options available for specific cards.



Windom Fields



Sunscape



Reflections

CUSTOM CARDS

To create a custom card, you may choose any card design **except Shining Star #T-6225**.

Simply email, fax, or mail us the wording you would like to use. Be sure to indicate which panel of the card you would like your message to be on.

All custom cards use the item number #__0100: with the chosen card style code filled in the blank space.

EXAMPLE: #A-0100

By filling in the blank with the "A" style code, you would be indicating that you want the Blessed Children card design. See all design options on pages 28-29.

All custom cards cost **\$2.50 each with a minimum order of 20**. If you choose to use one of the available verse options on a card other than the one designated, the customized price of \$2.50 each (minimum of 20) applies.

BIRTH/DEATH ANNOUNCEMENTS

If you would like us to create a birth/death announcement for you, please see the "Custom Card" instructions above. For your assistance, below we have included two suggestions for how to word an announcement. Keep in mind that you may customize the card however you would like and can use verses, or portions of verses, from any of the A Place To Remember cards.

NEWBORN DEATH VERSE OPTION

Our beloved baby, (Baby's Name) was born (Date) at (Time) and died (Date/Time) / We ask for your love and support as we slowly heal, always remembering.

STILLBIRTH VERSE OPTION

Our beloved baby, (Baby's Name) was born still (Date) at (Time) / We ask for your love and support as we slowly heal, always remembering.

CARDS W/ BLANK INSIDES



The Windom Fields (#W-1900), Sunscape (#F-0600), and Reflections (#V-1800) cards can be ordered with blank insides. The cost per card is \$1.75/each, including envelope. Use the item numbers noted here when ordering these card designs with no verse inside.

COMFORT / SYMPATHY



#A-0225: As you long to hold your precious child, let your faith and love bring you strength.



#D-0500: A little leaf has fallen from the tree of life; Forever aloft with the angels; A distance away yet nearer to its Creator. We hope it brings you comfort to know that we care and are here for you.



#D-0525: A tiny leaf has fallen from the tree of life. We hope it brings you comfort to know that we care and are here for you.



#E-0700: A teardrop silently falls into an ocean of emotion, sending its ripples of love and sorrow out into the universe. We, too, have been touched by your loss, and send you our understanding love and concern...



#E-0725: A teardrop falls...as hopes and dreams are shattered. We have been touched by your loss.



#F-0625: We are here for you both now and in the brighter days ahead.



#F-0650: As you remember your baby, may the warmth that fills your heart nourish your soul and give you strength.



#F-0680: Each new life, no matter how fragile or how brief, forever changes the world.



#G-0800: I understand this is a time that should have been different for you — an occasion not touched by sadness. May you find strength and renewed hope in knowing I care and am here for you both now and in the brighter days ahead.



#H-0900: We want you to know that we are thinking of you during these difficult days. May your memories and love bring you renewed strength and hope for tomorrow.



#I-1025: This tiny life... So pure... So fragile... So brief... We share your tears and send you our love and understanding.



#J-1150: May the love you have for your precious baby who died continue to grow with each passing day. May the sorrow that fills your heart be lessened by knowing that we care.



#J-1165: Each new life... No matter how fragile or how brief... Forever changes the world. We have been touched by your baby's life, and send you our love and support.



#K-1225: The imprint of your baby's brief life has touched our hearts. Please know that we care and are here for you.



#K-1250: Yesterday we shared your dreams / Today we share your tears / Tomorrow we'll share your hopes



#L-1350: When a soft breeze touches your face or the silent flight of a butterfly catches your eye, be reminded of the love shared with your child. We feel your loss and offer our understanding and support.



#O-1625: May the love that lives in your heart provide a special place to remember your beautiful baby.



#O-1650: Your child's life was much too brief, but the love that blooms in your heart will live forever.



#P-1765: Your little angel has touched our hearts.



#T-6325: *Cover Verse:* A Star Shines Brighter. *Inside Verse:* Let the light of your baby's life live forever in your heart. \$3.00 see pg. 27



#V-1825: We understand this is a painful journey and want you to know that we are here to walk with you.



#V-1850: The journey is long, but we are here to walk with you.



#W-1925: Nothing can take away the love for your baby that lives in your heart. May that love give you strength.



#W-1950: Your baby's life touched our hearts. We are so sorry for your loss.

GENERAL REMEMBRANCE / ANNIVERSARY OF DEATH



#F-0670: We understand that time alone will not heal your pain or erase your sorrow. Please know that we are here to help in whatever way we can.



#H-0925: As the hustle and bustle of life resumes and it seems no one recognizes the sorrow in your heart — we remember.



#H-0970: A special day with special memories of a very special love.



#K-1265: As the hustle and bustle of life resumes and it seems no one recognizes the sorrow in your heart — we remember.



#M-1425: Time has passed since your loss. We know that it still must be very painful for you, and we want you to know that we remember and are here for you.



#M-1470: We remember this special day and the meaning it has for you.



#M-1485: We remember that this day holds a certain pain for you, but hope that you can focus on the memories that bring you comfort.



#V-1870: We understand that time alone will not heal your pain or erase your sorrow. Please know that we are here to help in whatever way we can.



#W-1970: On this special day, we want you to know that we are thinking of you and remembering the love that you shared with your precious baby.

MOTHER'S DAY / FATHER'S DAY



#H-0985: We hope this Mother's Day you will... TAKE TIME to care for yourself, FEEL the love in your heart, and CELEBRATE the special meaning it has for you.



#H-0987: We hope this Father's Day you will... TAKE TIME to care for yourself, FEEL the love in your heart, and CELEBRATE the special meaning it has for you.



#K-1285: We hope this Mother's Day you will... TAKE TIME to care for yourself, FEEL the love in your heart, and CELEBRATE the special meaning it has for you.



#M-1485: We remember that this day holds a certain pain for you, but hope that you can focus on the memories that bring you comfort.



#W-1970: On this special day, we want you to know that we are thinking of you and remembering the love that you shared with your precious baby.

MULTIPLES

COMFORT/SYMPATHY WHEN ONE CHILD HAS DIED



#L-1325: While you rejoice in the gift of new life, allow yourself time to grieve the child you lost. We share your joy and your heartache and are here to help in whatever way we can.



Birth Announcement - Multiples: Parents can customize by inserting 2 or more baby figures. Babies have space to write name and other vital statistics; angel baby includes space to write in the date of death. Includes envelope. **SEE PAGE 15 FOR DETAILS**

Card (7"x5" opens to 7"x13") *Item #BM-3508*. \$2.00

Baby insert (2½"x4") *Item #BB-3542*. \$.35/ea

Angel Baby insert (2½"x4") *Item #BA-3567*. \$.35/ea

CAREGIVER CARD WHEN ONE CHILD HAS DIED:



#L-1340: At this confusing time of both great joy and great sorrow, know that I care and am here to help. Call me at (____) ____ - _____ if there is anything I can do.

PREMATURE BIRTH / NICU

Comfort Card:



#N-1525: Although we can't know all that you are going through, you are not alone. Our arms are around you. \$1.50

Caregiver Cards:



#N-1540: I know that the NICU can be a lonely and overwhelming place. Please know that I am here to help in whatever way I can. I can be reached at (____) ____ - _____. \$1.50



#N-1545: If I can answer questions or just be a support to lean on during this time, please let me know. \$1.50



#CC-3524: **NICU Caregivers' Card:** To provide a gesture of support from a nurse, social worker or physician. This card will reinforce that parents have someone to contact with questions or concerns. (5"x7"). \$2.00



#BA-3582: **Early Birth Announcement:** For announcement of an early birth. Parents can insert the cut-out baby figure and write in vital stats. Includes envelope and baby. (7"x5" opens to 7"x13"). \$2.35 **SEE PAGE 15 FOR DETAILS**



Baby insert (2½"x4") *Item #BB-3542*. \$.35/ea



Premature Baby Announcement: Includes envelope. (5"x7")
SEE PAGE 15 FOR DETAILS
Blue *Item #PB-3517*. \$2.00
Pink *Item #PP-3591*. \$2.00

CAREGIVER CARDS



#G-0840: As time goes by, you may find others forgetting about your loss or expecting you to "move on with your life." I want you to know that I care, and that I am available by phone at (____) ____ - _____ if you need someone to listen.



#O-1640: If I can help in any way as you discover the special place in your heart to remember your precious baby, please call me at (____) ____ - _____.

NICU:



#N-1540: I know that the NICU can be a lonely and overwhelming place. Please know that I am here to help in whatever way I can. I can be reached at (____) ____ - _____. \$1.50



#CC-3524: **NICU Caregivers' Card:** To provide a gesture of support from a nurse, social worker or physician. This card will reinforce that parents have someone to contact with questions or concerns. (5"x7"). \$2.00

MULTIPLES WHERE ONE CHILD HAS DIED:



#L-1340: At this confusing time of both great joy and great sorrow, know that I care and am here to help. Call me at (____) ____ - _____ if there is anything I can do.

MEMORIAL TEAR® CARD AND PIN

Embossed and die cut card holds a teardrop pin. Includes 5x7 embossed card, pewter pin, and envelope. (SEE PAGE 13 for larger photo and more details) *Item #MT-0417*. \$6.95

Cover Text:

This is a tear drop to be worn in memory of someone loved. The rose is a symbol of love that never ends.

(1 Corinthians 13: 8, 13)



HOSPITAL DOOR STICKER

This vinyl sticker with a low-tac adhesive back will both adhere to and remove easily from almost any surface. When a family experiences a loss, place the sticker on the patient's hospital door to alert staff that extra sensitivity must be used when entering. The sticker can be used more than once or it can be presented as a keepsake to the patient. 5 3/4" x 4 1/4" *Items #DS-0308*. \$1.50



BLANK NOTE CARDS / SERVICE RECORDS

The card designs below have been printed on bond paper to be used for funeral service records. They are shipped flat in quantities of 250/pkg., ready to be run through a laser printer. Folded size is 4 1/4" x 5 1/2".*

Design	Title	Item #	Price
A.	Blessed Children	A-0210	\$11.00/pkg. CLOSEOUT
B.	Dreams	B-0310	\$11.00/pkg. CLOSEOUT
C.	Letting Go	C-0410	\$11.00/pkg. CLOSEOUT
D.	Lone Leaf	D-0510	\$11.00/pkg. CLOSEOUT
I.	Tears of a Clown	I-1010	\$11.00/pkg. CLOSEOUT
K.	A Special Place	K-1210	\$11.00/pkg. CLOSEOUT

*NOTE: Envelopes are NOT included but can be purchased separately in packs of 250.

Item #BE-0052. \$19.00



A



B



C



D



E



I



K

ACKNOWLEDGEMENT CARDS

Matching the designs of the service records (see below), these acknowledgement cards include the following verse: *At a time in our lives / when so little seems to make sense / we appreciate / the kindness and support of our / family and friends. / Thank you.*

These bond paper cards are shipped folded in lots of 50/package and include white bond envelopes. Folded size: 4 1/4" x 5 1/2".

Design	Title	Item #	Price
A.	Blessed Children	A-0215	\$4.00/pkg of 50 CLOSEOUT
B.	Dreams	B-0315	\$4.00/pkg of 50 CLOSEOUT
C.	Letting Go	C-0415	\$4.00/pkg of 50 CLOSEOUT
D.	Lone Leaf	D-0515	\$4.00/pkg of 50 CLOSEOUT
E.	Fallen Teardrop	E-0715	\$4.00/pkg of 50 CLOSEOUT
I.	Tears of a Clown	I-1015	\$4.00/pkg of 50 CLOSEOUT